

Yu-San Han¹, Wann-Nian Tzeng¹, Yung-Sen Huang²
and I Chiu Liao²

¹Department of Zoology, College of Science, National
Taiwan University, Taipei, Taiwan.

²Taiwan Fisheries Research Institute, 199 Hou-lh Road, Keelung 202, Taiwan.

(Accepted 28 May 2001)



Silvering in the Eel: Changes in Morphology, Body Fat Content, and Gonadal Development

Abstract

The commonly used criterion of maturing degree of the eel is skin color, with immature adults as "yellow eel" and maturing adults as "silver eel". The process of metamorphosis in eel is thus named "silvering". In eels, the common characters of silvering process are accompanied by morphological (e. g. color and thickness of integument, eye size, body length and weight, size of pectoral fins) and physiological (e. g. age at maturity, thickness of digestive tract, visual pigments, composition and function of skeletal muscle, swim bladder structure, locomotory behavior, density of chloride cells in the gill) modifications, together with the development of gonads. These modifications are beforehand preparation for the future spawning migration in the deep sea environment. The knowledge about the phenomena occurring in eel silvering comes mainly from studies in temperate eel species, namely Japanese, American, and European eels, and this review is mainly concerned on the morphological and gonadal changes during the silvering of eels.

Key words: Eel, Silvering, Metamorphosis, Reproduction, Migration

The life history of the catadromous eel genus *Anguilla* is very complicated and distinctive. The eel spawns in the deep tropical/subtropical ocean. Their leaf-like larvae, leptocephali, are transported and dispersed by ocean currents, and metamorphose into glass eels after several months of drifting. Glass eels become pigmented elvers in the estuary and grow in freshwater until silvering. Eels undergo a complex series of morphological and physiological changes as they metamorphose from freshwater yellow form to seagoing silver form in preparation for spawning migration. Morphological changes associated with this process include a change in skin color from

yellow to silver/bronze⁽¹⁾, integumental thickness^(1,2), increased eye size⁽³⁾, shape of pectoral fins and snout⁽¹⁾. On the other hand, physiological changes include the degeneration of digestive tract⁽⁵⁾, changes of visual pigments⁽³⁾, modification in the composition and function of skeletal muscle⁽⁶⁾, alternation of swim bladder structure⁽⁷⁾, change of locomotory behavior⁽⁴⁾, higher density of chloride cells in the gills⁽⁸⁾, and gonadal development⁽⁹⁾.

The metamorphosis of eels from "yellow" to "silver" stage could be regarded as the onset of puberty. In teleosts, puberty is the period during which a juvenile acquires the capacity of reproduction for the first time. It starts with

Han, Y. S. W. N. Tzeng, Y. S. Huang and I C. Liao (2001) Silvering in the eel: changes in morphology, body fat content, and gonadal development. J. Taiwan Fish. Res., 9(1&2): 119-127.

spermatogenesis in the male and oogenesis in the female, and ends with the spermiation and ovulation in the male and female, respectively^(10,11). For eels, the development of gonads is quiet for many years till the onset of silvering, but is limited to the beginning of gametogenesis with low gonadosomatic index (GSI). Furthermore, if silver eels are kept in aquaria, they do not undergo further sexual maturation. The sexual blockage at silver phase seems to exist in all eel species, though with various levels of constraint among species⁽¹²⁾.

Due to the rapid development of the eel aquaculture industry in Southeast Asian countries, eelers in the estuary were overexploited, which have severely influenced the recruitment of the eel in the rivers. Therefore, it is important to develop artificial propagation techniques to sustainably supply eelers for aquaculture and to reduce the fishing pressure on the wild eel. However, little is known about the reproduction biology of the eel, as sexually mature eels have never been caught in the wild, and silver eels do not complete gonadal development in captivity. Thus, hormonal treatment is the only approach to induce advanced gonadal development. Experiment to successfully induce spawning of Japanese eels dates back to 1974⁽¹³⁾. Unfortunately, the larvae obtained usually did not survive long (253 days reported by Tanaka, in Japan), and did not grow into glass eels. Hence, in order to provide proper management policy of eels (e. g. setting up fishing - forbidden seasons) and aid artificial propagation (e. g. the choice of eels for artificial maturation), it is helpful and necessary to better understand the silvering phenomena and mechanisms of the eel. In this review, we focus on the comparison of silvering phenomena among anguillid eels according to the results of our study and published papers, and the possible roles of these changes during silvering are discussed.

Migration in silver eel

It is generally accepted that the eel starts

downstream spawning migration after metamorphosing from "yellow" to "silver" eel. The silver eel may migrate as long as thousands of kilometers back to its spawning ground⁽¹⁾. For example, the Japanese eel is supposed to spawn in the North Pacific Ocean west of the Mariana Islands, which is more than 3000 km away from the continental shelf of Asia⁽¹⁴⁾. In European eel, the distance may be over 6000 km from Europe mainland to Sargasso Sea, the inferred spawning area⁽¹⁵⁾.

The temperate eels usually have similar migration seasons. From our investigation results, silver Japanese eels occurred in late autumn and winter (Table 1). In European eel, the migration activity starts in August, peaks in September/October, and declines in January/February⁽¹⁾. In American eel, migration peaks between late August and mid-November⁽¹⁶⁾. In addition, for New Zealand longfin and shortfin eels (*A. dieffenbachii* and *A. australis*, respectively), migration occurs in March and April, about late autumn in the southern hemisphere⁽¹⁷⁾. These results indicate that the migration time of silver eels occur mainly in autumn and winter for temperate species.

In fishes, reproductive processes often exhibit endogenous rhythms controlled internally and externally. The external environmental cues that are used more commonly are photoperiod and temperature⁽¹⁸⁾. In temperate zone, since the seasonal changes of these two factors are significant, they could be used as the silvering triggers by the temperate eels for synchronization of their reproductive activity. However, the mechanism is still unclear and remains to be further investigated.

Feeding or not during silvering

Whether the eel continues or stops feeding during silvering remains controversial. In European eel of yellow stage, the seasonal variations in appetite show that the food intake of the eel increases in March, peaked in summer, and then declines during autumn followed by a winter fast of several months which may

be due to the lower water temperature^(1,19). Since the silvering seasons of the eel coincide with those of declining food intake, and silver eels have regressed digestive tracts⁽⁴⁾, it is generally accepted that silver eels do not feed. Our results also showed that silver Japanese eels have regressed digestive tracts. However, Beulleus et al.⁽²⁰⁾ observed that cultured male eels continue to eat and grow in silver stage, although with

poor appetite. In addition, Dollerup and Graver⁽²¹⁾ found that after repeated induction of testes maturation with HCG induce spermiation in male silver eels, they are then given food and the food intake gradually increases and eels grow both in size and weight. Their atrophied alimentary tracts regenerate. This suggests that, at least in the males, the reversibility of digestive function is possible.

Table 1. Comparison of characters in silver stage among Japanese, European and American eels.

<i>Characters</i>	<i>A. japonica</i>	<i>A. anguilla</i>	<i>A. rostrata</i>
Migratory time (period)	Oct- Feb*	Aug-Feb	Aug- Nov
Age (years)	♂ 6.4 (mean)	♂ 6-9	♂ 12.7 (mean)
	♀ 8.3 (mean)	♀ 8-12	♀ 19.3 (mean)
Size (cm)	♂ 45-61*	♂ 35-41	♂ 35-47
	♀ 50-79*	♀ 54-61	♀ 40-94
Ocular index (OI)	♂ 3.7-5.8*	♂ >6.2	>6.0
	♀ 3.2-6.9*	♀ >7.2	
Gonadosomatic index (GSI)	♂ 0.03-0.25*	♂ 0.03-0.29	♂ 0.63 (mean)
	♀ 0.69-2.24*	♀ 1.5 (mean)	♀ 1.62-3.48
Muscle fat content (%)	13-25*	10-28	-----

* Data based on Han et al., unpublished.

Marchelidon et al.⁽²²⁾ found that naturally fasting silver eels exhibit a more significant regression of the digestive tract than that of yellow eels under experimental starvation. Pankhurst and Sorensen⁽²³⁾ indicated that starvation alone does not result in gut degeneration in sexually immature European and American eels, but gut significantly degenerates in silver and hormone-injected sexually mature eels. These results suggest that the regression of the alimentary tract in silver eel should be hormone-triggered, not only because of fasting. In natural condition, it is more possible that under the effect of endocrine during silvering, the appetite of

silver eels were inhibited, and feeding may not be necessary.

Size and age at first maturity

In European eels, the size of silver eels was estimated to be 35-41 cm for males and 54-61 cm for females, and the age of silver eels ranged from 8-12 years in females, and from 6-9 years in males⁽¹⁾. In Japanese eels, our study showed that they reached silver stage at the length range of 45-61 cm in males and 50-79 cm in females (Table 1). Tzeng et al.⁽²⁴⁾ found that the mean ages of silver Japanese eels were

6.4 and 8.3 years in the male and female, respectively. In American eels, the size and age of silver eels were 35-47 cm and 12.7 years for males, and were 40-94 cm and 19.3 years for females⁽¹⁶⁾. The common phenomenon derived from these studies is that the male eels enter silver phase at younger age and shorter body length than female eels.

The differences in age and size between silver male and female raise a question: which factors correlate to the onset of silvering? The body size? Age? Or both? For American eels of silver stage distributed between Georgia and Newfoundland, the ratio of maximum to minimum values was 1.6 for body length and 2.7 for age⁽²⁵⁾. In European eel of northern and central waters, silver male eels were slightly older (average about 1.5 years) than those from southern Europe. The age difference between females was even greater. The average length, however, did not differ to the same extent⁽¹⁾. In addition, Beulleus et al.⁽²⁰⁾ reported that European silver eels occur at earlier ages in hatchery conditions than in natural environment. Hence, these results infer that the silvering of eels seem to be more related to size than to age.

Tzeng et al.⁽²⁴⁾ found that the growth rate of the females at juvenile stage has no difference to that of males, and it is well known that the size at maturity is shorter in males than in females. If the onset of silvering was size dependent for each sex, then the mean age at maturity should be younger in males than in females. This is proved to be true as described previously (Table 1). On the other hand, Vøllestad⁽²⁶⁾ indicated that the age at first maturity was negatively related to growth rate. That is, eels with better nutrition might become sexually mature earlier than those with poor nutrition. This could partially explain the variety in the age of silvering.

Sex ratio

Ontogenetic development of the eel is very complicated, and the mechanism of its sex determination is still unclear. In European eel,

karyotypes studies failed to identify heteromorphic sex chromosomes⁽²⁷⁾, and descriptions of gonadal differentiation met various contradictory opinions: the primordial gonad passes through an intersexual phase, either a female or a male phase; the primordial gonad of a female phase; or a testis-like primordial gonad phase⁽²⁰⁾. It is thus difficult to determine the sex of the eel at early life stage. In natural environment, European eels show a variable sex ratio, ranging from almost complete males to predominantly females. It is commonly believed that males prefer living in estuaries and brackish lagoons, and females are found mainly in freshwater⁽¹⁾. Sinha and Jones⁽⁴⁾ raised a possible explanation for this phenomenon. If sex is determined metagamically, then on arrival all elvers are all asexual. Their migration is random and their sex is determined by the environmental cues in which they grow up. That is, freshwater environment may prefer the development of female sex, while brackish water one, on the contrast, may favor the development of male sex.

In culture ponds, where eels are usually reared in high density, males predominate significantly. On the other hand, glass eels could be feminized by feeding them estradiol-17 β ⁽²⁸⁾. These results indicate that the eels might possess bi-directional potential of sex development. Consider the situation happening in natural and cultural conditions, density may be a major role for eel sex determination. How the signal of density is translated and processed to affect sex differentiation remains unknown. Maybe eels in crowded population suffer higher pressure (in cultured ponds) or lower food availability (in natural environments), which would modify the endocrine condition and thus affect the sex determination cascade of the eels toward the males. In contrast, if the space was spacious and/or the food was plenty, they might prefer sex differentiation toward the females.

Morphological changes during silvering

In silver stage, the ocular index (OI) of European

eel was ≤ 6.5 in the sexually immature adults, and >6.5 in the sexually mature ones⁽³⁾. In cultural capacity, silver females and males of European eel had OI of >7.2 and >6.2 , respectively⁽²⁰⁾. On the other hand, the mean OI in sexually maturing American eels usually exceed 6.0. In our investigation, the ranges of OI of Japanese eel were between 3.2- 6.9 and 3.7- 5.8 in silver females and males, respectively (Table 1), and was highly correlated to GSI ($R^2=0.65$, data not shown). Compared to the silver European and American eels, the silver Japanese eel in Taiwan has lower mean OI, which may be due to species-specific difference. Aside from the change in eye size during silvering, the visual pigments of European eel are also modified, with increased numbers of rod cells and decreased numbers of cone cells⁽³⁾. On the other hand, the Fin-index (FI) of Japanese eel in our study showed significant increase in silver stage but was highly overlapped among maturation stages, thus no a clear-cut point could be defined (unpublished). What is the benefit of having larger pectoral fins and eyes for silver eels? It is well known that eels have to migrate long distance to reach the spawning area. It is thus reasonable to suppose that larger pectoral fins may add swimming ability. Similarly, the large eyes and rich rod cells in retinas are also adaptive to dim environment. Hence, these modifications could be regarded as beforehand preparation for the demand of future spawning migration in the deep sea environment.

The translocation of energy, especially the fat, from muscle and liver tissues to the gonads is significant during sexual maturation. In female Japanese eels of silver stage, deposition of large amount of oil-droplets and small amount of yolks in oocytes are actively in progress, which needs the involvement of the liver. It may be the cause for the livers to become slightly larger in silver females and is reflected on the slightly increasing hepatosomatic index (HSI). On the other hand, no significant change of mean HSI was seen in silver Japanese males (unpublished), as they did not accumulate oil-droplet and vitellogenin in spermatogonia, and their testes are still far from

matured.

Development of gonad during silvering

During silvering, the GSI of male New Zealand longfin eel shortfin eel in non-migrating stages is less than 0.05%. Spermatogonia are seen in the small nests with 2 to 4 cells⁽³²⁾. In migrant shortfins, GSI moderately increases to 0.20% with spermatogonia mainly in type A and B stage, only a few spermatozoa are occasionally observed. On the other hand, migrating longfin males have much-increased GSI (0.96%), and spermatozoa are seen in the testes of the majority (83%). In American eel *A. rostrata*, the mean GSI of the silver males was 0.63%. The testes have well-defined tubules with distinct lumens lined with spermatocytes and spermatogonia⁽²⁾. In European eel maintained in captivity, intersex yellow eels and male silver eels have relatively low GSI between the range of 0.01-0.04 and 0.03-0.29, respectively⁽²⁰⁾, and the formation of tubules with clear lumina is the only criterion to discriminate between these two phases. Colombo et al.⁽⁹⁾ indicated that in European eel, the germ cells of some nests in yellow stage are mainly in mitosis, and single oocyte is found in all section. Secondary spermatocytes and spermatids are not observed. In silver males, however, nests of spermatids and spermatozoa are present in almost all testes. These results show the high variety in development status of testes during silvering between different eel species. In our study, the GSI in males ranged between 0.03-0.25 (Table 1). Although the GSI was low in all stages, spermatogenesis was active (data not shown). The increasing number of type B spermatogonia took the place of connective tissues during silvering process. In silver males, spermatids, spermatozoa, and single oocyte were never observed. These results suggest that the testes of silver males in Taiwan are still in early stage of spermatogenesis compared to other eel species. Unlike the low degree of development in male testes, there is significant enlargement in oocyte diameters during silvering, and the rapid developments of ovaries coincide with the

morphological changes. The oocytes often enter oil-droplets stage and sometimes even early vitellogenic stage with rapid increase of GSI. In previous studies, the GSI in migratory females vary from average 1.5% in *A. anguilla*, 2.0% in *A. japonica*, 2.8% in *A. bicolor bicolor*, 3.3% in *A. australis*, and 7.2% in *A. dieffenbachii*⁽³³⁾ (Table 1). In American eel, it ranges between 1.62-3.48% due to different collection areas⁽¹⁶⁾. In our study, the GSI for silver female Japanese eels ranged between 0.69-2.24% (mean $1.33 \pm 0.08\%$, Table 1), somewhat lower than previous study in Japanese eel and was comparable to European eel. Why are the mean GSI of Japanese and European eels lower than other anguillid eels? We suppose that the degree of gonadal development in silver eel before migration might be inversely correlated to its migratory distance. In European eel, the distance is over 6,000 km from Europe mainland to Sargasso Sea, the supposed spawning area⁽¹⁵⁾. In Japanese eel, the distance is longer than 3000 km from Asia mainland to inferred spawning ground, the North Pacific Ocean west the Mariana Islands⁽¹⁴⁾. Such long distance migration would take a few months for eels to reach there. It would thus be "energy wasteful" to trigger gonadal development early before its spawning time, and evolution may thus favor low-degree developments of gonads for eel species that have to migrate long distances. If our speculation is correct, then we could predict that migratory distance may be longer in European and Japanese eels with lower mean GSI in silver stage, and is shorter for eel such as *A. dieffenbachii*, which has larger mean GSI in silver stage compared to other anguillid eels (Fig. 1). However, it is necessary to identify the other anguillid eels' spawning area to clarify this hypothesis.

Energy stores and the onset of silvering

In 1974, Frisch and McArthur⁽³⁴⁾ raised the weight hypothesis of the onset of puberty, indicating that puberty occurs when body weight reaches a certain level. This hypothesis was then modified by

Ronnekleiv et al.⁽³⁵⁾, who suggested that puberty is probably induced when fat stores, not weight itself, reach a certain level. For eels, they usually cease feeding in silver stage and have to migrate long distance back to their spawning ground. The energy required for migration and gonadal development thus depends totally on large amount of fat accumulated in the body. From this point of view, it is reasonable to suppose that the migration in silver phase may need a minimum level of fat reserves⁽³⁶⁾. The hypothesis is also supported by our study in Japanese eels. The fat stores in muscle range between 13-25% (mean 18%) in the silver stage (Table 1) and the lowest limit of silvering is 13% in both sexes. However, Svedäng and Wickström⁽³⁷⁾ found that the silver European eels of few sampling areas have mean muscle fat content lower than 10%, some specimens have fat stores even as low as 1%. They suggest that the maturation process in eel may be more flexible than were thought before, and migration together with gonad development might arrest temporarily and resume feeding to accumulate enough fat reserves before migration started again. Since the eel stage was judged only by visual inspection in their study without gonadal histology and data of morphometric index, error judgment of stages might occur and result in the underestimation of fat content in silver eels.

Conclusion

The classification of maturation stages of the eel can be done by the silver color of the skin, changes of the morphometric indexes, or gonadal histology. The changes of these characters are usually coupled together during silvering (Fig. 2) The silver eel remains in the pre-maturation stage although it enters puberty. In addition, the male eels enter silver phase at a younger age and shorter size than the females, which may be the result of sex-related difference in growth pattern. The simultaneous changes in morphology and physiology are thought to be a biological pre-adaptation to the spawning ground in

deep sea. To better understand the whole silvering of eels, it is necessary and helpful to integrate studies

from different fields, e.g. molecular biology, endocrinology, physiology, and ecology.

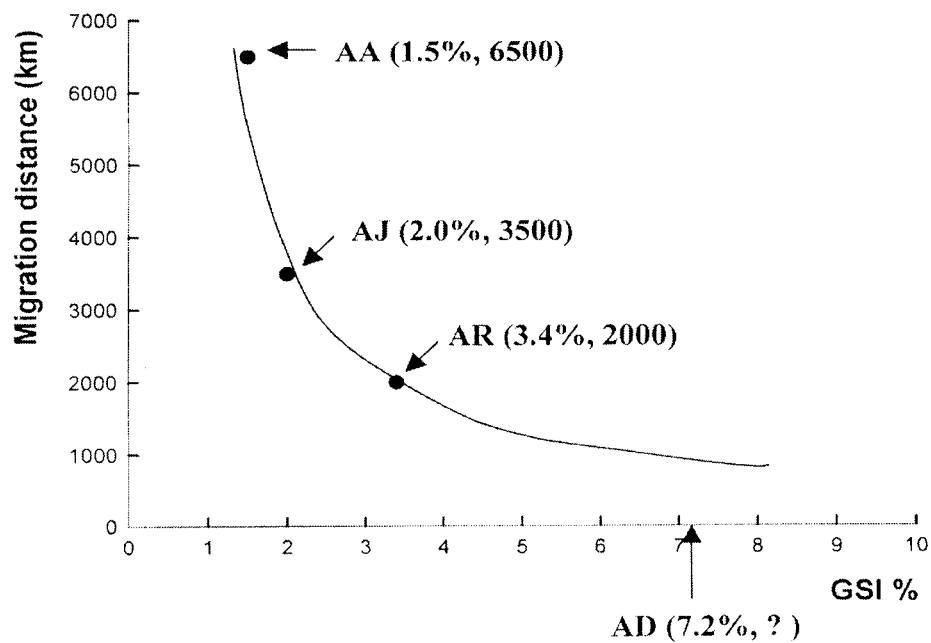


Fig. 1. Hypothesis of the relationship between female GSI and migration distance. Abbreviation: AA, *Anguilla anguilla*; AJ, *A. japonica*; AR, *A. rostrata*; AD, *A. dieffenbachii*. The numbers inside parentheses indicate the GSI and distance (km), respectively.

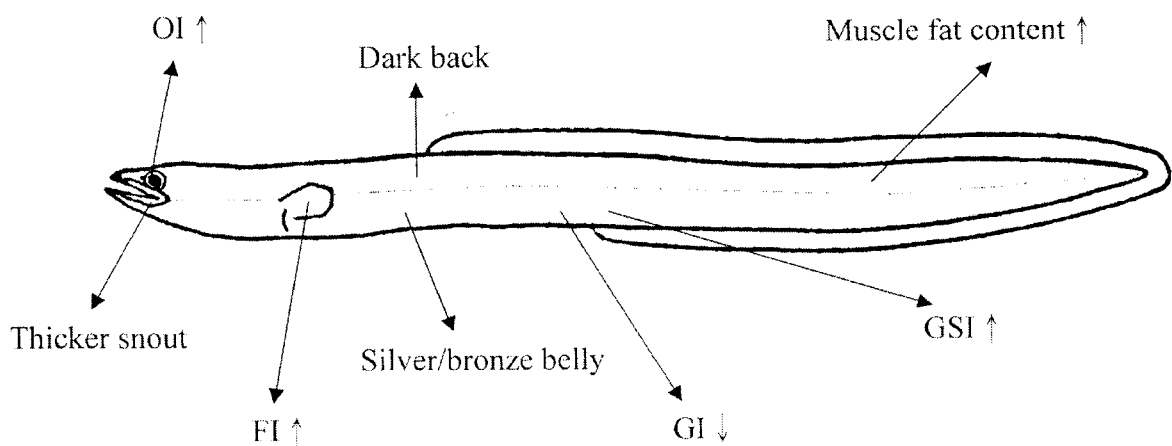


Fig. 2. Changes in morphology and physiology during silvering in eel.

Acknowledgements

The study of Japanese eel in Taiwan was financially supported by the National Science Council, Taiwan (NSC-89-2311-B002-077 and NSC 89-2313-B056-008).

References

1. Tesch, F. W. (1977) The Eel. Biology and management of anguillid eels. London: Chapman and Hall.
2. Sorensen, P. W. and N. W. Pankhurst (1988) Histological changes in the gonad, skin, intestine and olfactory epithelium of artificially-matured males American eels, *Anguilla rostrata* (LeSueur). J. Fish Biol., **32**: 297-307.
3. Pankhurst, N. W. (1982) Changes in body musculature with sexual maturation in the European eel *Anguilla anguilla* L. J. Fish Biol., **21**: 417-428.
4. Sinha, V. R. P. and J. W. Jones (1975) The European Freshwater Eel. Liverpool: Liverpool University Press.
5. Pankhurst, N. W. and P. W. Sorensen (1983) Degeneration of the alimentary tract in sexually maturing European eels *Anguilla anguilla* (L.) and American eels *Anguilla rostrata* (LeSueur). Can. J. Zool., **62**: 1143-1149.
6. Pankhurst, N. W. (1982) Relation of visual changes to the onset of sexual maturation in the European eel *Anguilla anguilla* L. J. Fish Biol., **21**: 127-140.
7. Kleckner, W. B. (1980) Swim bladder volume maintenance related to initial oceanic migratory depth in silver-phase *Anguilla rostrata*. Science, **208**: 1481-1482.
8. Fontaine, Y. A., M. Pisam, C. L. Moal and A. Rambourg (1995) Silvering and gill 'mitochondria-rich' cells in the eel, *Anguilla anguilla*. Cell Tissue Res., **281**: 465-471.
9. Colombo, G., G. Grandi and R. Rossi (1984) Gonad differentiation and body growth in *Anguilla anguilla* L. J. Fish Biol., **24**: 215-228.
10. Goos, H. J. Th. and R. Schulz (1997) Gonadal steroid hormones drive puberty in fish. In Advances in Comparative Endocrinology. Vol 2 Monduzzi Editore, Bologna, 1429-1433 pp.
11. Dufour, S., Y. S. Huang, K. Rousseau, M. Sbaihi, N. E. Belle, B. Vidal, J. Marchelidon, B. Quérat, E. Burzawa-Gérard, C. F. Chang and M. Schmitz (1999) Puberty in teleosts: new insights into the role of peripheral signals in the stimulation of pituitary gonadotropins: Proceedings in the 6th International Symposium on the Reproductive Physiology of Fish. Bergen, Norway, 455-461 pp.
12. Fontaine, Y. A. and S. Dufour (1991) The eels: from life cycle to reproductive endocrinology. Bull. Inst. Zool., Acad. Sin., Monograph., **16**: 237-248.
13. Yamamoto, K., M. Omori and K. Yamauchi (1974) Oogenesis of the Japanese eel. Bull. Japanese Soc. Sci. Fish., **40**: 9-15.
14. Tsukamoto, K. (1992) Discovery of the spawning area for Japanese eel. Nature, **356**: 789-791.
15. Schmidt, J. (1922) The breeding places of the eel. J. Phil. Trans. R. Soc. Lond. B, **211**: 179-208.
16. Jessop, B. M. (1987) Migrating American eels in Nova Scotia. Trans. Am. Fish. Soc., **116**: 161-170.
17. Todd, P. R. (1974) Studies on the reproductive biology of New Zealand freshwater eels. Ph. D. thesis, Victoria University of Wellington, New Zealand, 328 pp.
18. Baggerman, B. (1990) Sticklebacks. In Reproductive Seasonality in Teleosts: Environmental Influences, (A. D. Munro, A. P. Scott, and T. J. Lam eds.), CRC Press Inc., Boca Raton, FL, USA. Chap. 5.
19. Castle, P. H. J. and G. R. Williamson (1974) On the validity of the freshwater eel species *Anguilla ancestralis* Ege from Celebes. Copeia, **1974**: 569-570.
20. Beulleus, K., E. H. Eding, P. Gilson, F. Ollevier, J. komen and C. J. J. Richter (1997) Gonadal differentiation, intersexuality and sex ratios of European eel (*Anguilla anguilla* L.) maintained in captivity. Aquaculture, **153**: 135-150.
21. Dollerup, J. and C. M. Graver (1985) Repeated induction of testicular maturation and spermiation, alternating with periods of feeding and growth in silver eels, *Anguilla anguilla* (L.). Dana, **4**: 19-39.
22. Marchelidon, J., M. Schmitz, L. M. Houdebine, B. Vida, N. L. Belle and S. Dufour (1996) Development of a radioimmunoassay for European eel growth hormone and application to the study of silvering and experimental fasting. Gen. Comp. Endocrinol., **102**:

- 360-369.
23. Pankhurst, N. W. and J. N. Lythgoe (1983) Changes in vision and olfaction during sexual maturation in the European eel *Anguilla anguilla* (L.) J. Fish Biol., **23**: 229-240.
24. Tzeng, W. N., H. R. Lin, C. H. Wang and S. N. Xu (2000) Differences in size and growth rates of male and female migrating Japanese eels in Pearl River, China. J. Fish Biol., **57**: 1245-1253.
25. Bouillon, D. R. and R. L. Haedrich (1985) Growth of silver eels (*Anguilla rostrata*) in two areas of Newfoundland. J. Northwest Atlantic Fish. Sci., **6**: 95-100.
26. Vøllestad, L. A. (1992) Geographic variation in age and length at metamorphosis of maturing European eel: environmental effects and phenotypic plasticity. J. Animal Ecol., **61**: 41-48.
27. Wiberg, V. H. (1983) Sex determination in the European eel (*Anguilla anguilla* L.) Cytogenet. Cell Genet., **36**: 589-598.
28. Tachiki, H. and T. Nakagawa (1993) Induction of spawning in female cultured eel *Anguilla japonica*. Bull. Aichi. Fish. Res. Int., **1**: 79-80.
29. Bertin, L. (1956) Eels, a biological study. Cleaver-Humn Press, London, 192pp.
30. Tyler, C. R., J. P. Sumpter and N. R. Bromage (1988) In vivo ovarian uptake and processing of vitellogenin in the rainbow trout, *Salmo gairdneri*. J. Exp. Zool., **246**: 171-179.
31. Tyler, C. R., T. G. Pottinger, K. Coward, N. Bereford and S. Maddix (1991) Salmonid follicle-stimulating hormone (GtH1) mediates vitellogenic development of oocytes in the rainbow trout, *Oncorhynchus mykiss*. Biol. Reprod., **57**: 1238-1244.
32. Lokman, P. M. and G. Young (1998) Gonad histology and plasma steroid profiles in wild New Zealand freshwater eel (*Anguilla dieffenbachia* and *A. australis*) before and at the onset of the natural spawning migration. II Males. Fish Physiol. Biochem., **19**: 339-347.
33. Lokman, P. M., G. J. Vermeulen, J. G. D. Lambert and G. Young (1998) Gonad histology and plasma steroid profiles in wild New Zealand freshwater eel (*Anguilla dieffenbachia* and *A. australis*) before and at the onset of the natural spawning migration. I Females. Fish Physiol. Biochem., **19**: 325-338.
34. Frisch, R. E. and J. W. McArthur (1974) Menstrual cycles: fatness as a determinant of minimum weight for height necessary for their maintenance or onset. Science, **185**: 949-951.
35. Ronnekleiv, O. K., S. R. Ojeda and S. M. McCann (1978) Undernutrition, puberty and the development of estrogen positive feedback in the female rat. Biol. Reprod., **19**: 414-424.
36. Larsson, P., S. Hamrin and L. Okla (1990) Fat content as a factor inducing migratory behavior in the eel (*Anguilla anguilla* L.) to the Sargasso Sea. Naturwissenschaften, **77**: 488-490.
37. Svedäng, H. and H. Wickström (1997) Low fat contents in females silver eels: indications of insufficient energetic stores for migration and gonadal development. J. Fish Biol., **50**: 475-486.